

## Wycombe Abbey Access Arrangements – November 2021

Below is a table of our Wycombe Abbey Sessions with some very important information relating to:

### - Drop off, Parking, Access, Supervision and Pick Up

All club members (staff, swimmers, parents etc) must follow these instructions; otherwise upon review with the school we could face losing these sessions; and that will compromise the offering that we can deliver to your swimmers in the future.

| Day  | Time  | Squad | Lead Coach | Access information   |
|------|---|-------|------------|--|
| Mon  | <p>Arriving onsite: 18:00-18:15</p> <p><b>DRIVE THROUGH Clarence Gate on Marlow Hill</b></p> <p>PrePool (Viewing area) &amp; Changing: 18:15-18:30<br/>Access to Poolside: 18:30<br/>Session End: 20:30<br/>Departing Sport Centre by 20:45</p> <p><b>Pick up at front entrance car park</b></p> <p>Departing Site by 21:00</p> | SC    | David      | <p>When you arrive at the school please drive-up Marlow Hill and turn into the first large side gate called <b>Clarence Gate</b>. This will be opened by the Coach in attendance and will remain open for 15 minutes.</p> <p><b>Parents then drive off site through the next gate along the drive.</b></p>               |
| Thur | <p>Arriving onsite: 18:15-18:30</p> <p><b>DRIVE THROUGH Clarence Gate on Marlow Hill</b></p> <p>PrePool (Viewing area) &amp; Changing: 18:30-18:45<br/>Access to Poolside: 18:45<br/>Session End: 20:45<br/>Departing Sport Centre by 20:55</p> <p><b>Pick up at front entrance car park</b></p> <p>Departing Site by 21:00</p> | JP    | Joe        | <p><b>NO PARENTS or ANY SPECTATORS will be permitted on site.</b></p> <p>All swimmers must enter at the required time and must stay for the full session.</p> <p>All swimmers must be escorted to the pool by approved WDSC personnel that have undertaken training and appropriate checks with the school and club.</p> |
| Fri  | <p>Arriving onsite: 17:30-17:45</p> <p><b>DRIVE THROUGH Clarence Gate on Marlow Hill</b></p> <p>PrePool (Viewing area) &amp; Changing: 17:45-18:00<br/>Access to Poolside: 18:00<br/>Session End: 19:45<br/>Departing Sport Centre by 19:55</p> <p><b>Pick up at front entrance car park</b></p> <p>Departing Site by 20:10</p> | JP    | Joe        | <p><b>At this stage, any late swimmers will NOT be granted access to the swim session; because they will be unable to enter the site through the side gate.</b></p> <p><b>We don't have permission for swimmers to enter the site through the front gates – but pick up will be from them.</b></p>                       |

Wycombe District Swimming Club  
Wycombe Leisure Centre  
Handy Cross, High Wycombe HP11 1UP

t. 01494 410 075 (WDSC direct)  
t. 01494 688100 (Leisure Centre main desk)  
e. enquiries@wycombe-swimming.org.uk.  
www. wycombe-swimming.org.uk

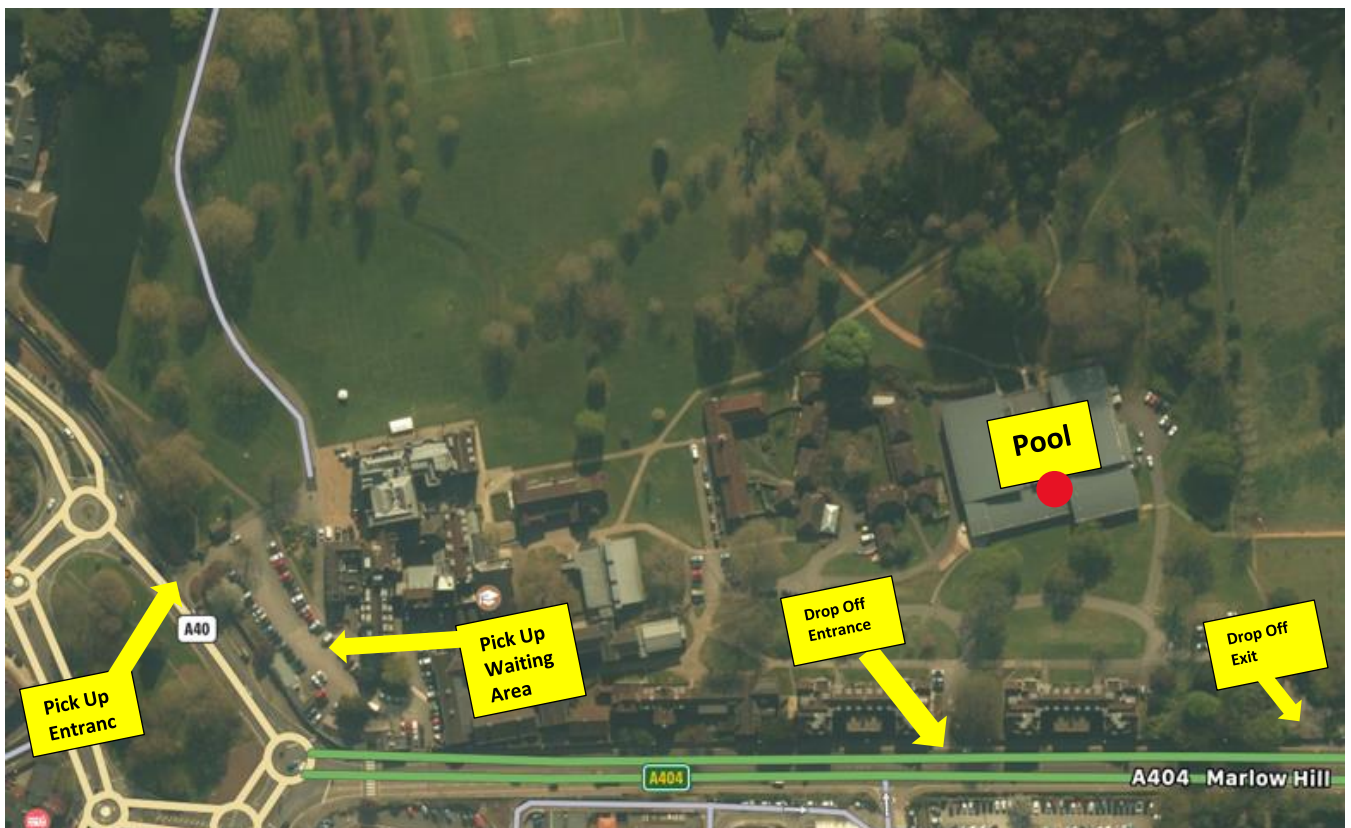


**At this stage, no parents or spectators will be permitted access to the pool or the site.**

This is because the pool is located in the heart of the school grounds and the security in place at the school is incredibly high for all people wanting access. This is particularly high during school terms. **Additionally, because Wycombe Abbey' girls will be participating in our swimming sessions, this is a key reason for the security being placed on the club. The school doesn't want any unapproved adults roaming the grounds. So once car drop off is complete, parents must leave the site through the secondary gate.**

Below is an aerial view map of the majority of the Wycombe Abbey grounds.

The swimming pool is located on the far right (on the map below).



Wycombe District Swimming Club  
Wycombe Leisure Centre  
Handy Cross, High Wycombe HP11 1UP

t. 01494 410 075 (WDSC direct)  
t. 01494 688100 (Leisure Centre main desk)  
e. [enquiries@wycombe-swimming.org.uk](mailto:enquiries@wycombe-swimming.org.uk)  
[www.wycombe-swimming.org.uk](http://www.wycombe-swimming.org.uk)



### **Additional information regarding Wycombe Abbey**

There will, at times, be some sessions that may need to be modified due to scheduled School events that will be taking place at the school or at time like Christmas. You will be notified of these changes on the standard "Training Changes" page on the website. This will let you know if the sessions are cancelled, modified in duration or rescheduled.

### **Safeguarding - Very important**

With Wycombe Abbey not being a public leisure centre, our coaches (and potentially Team Managers) will need to wait till swimmers are collected by you, the parent/carer.

**It is imperative that all swimmers are collected promptly, for their own safeguarding, at the required times mentioned above.**

Should parents consistently be late for pick up, then the club would potentially need to exclude that swimmer from the relevant sessions and potentially it could lead to further action by the Welfare Officers and club, if deemed a safeguarding issue.

The access and arrangements in place are for the **safety and protection** of the Schools pupils and our own swimmers.